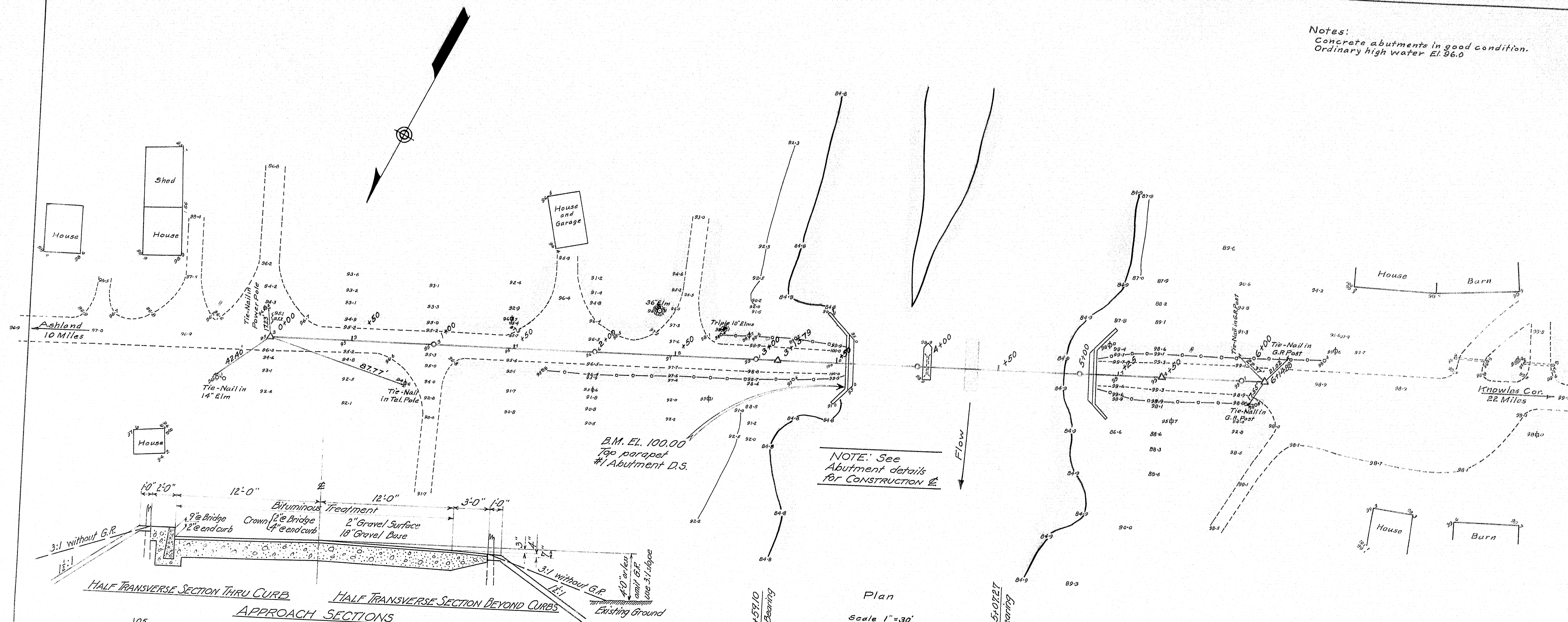
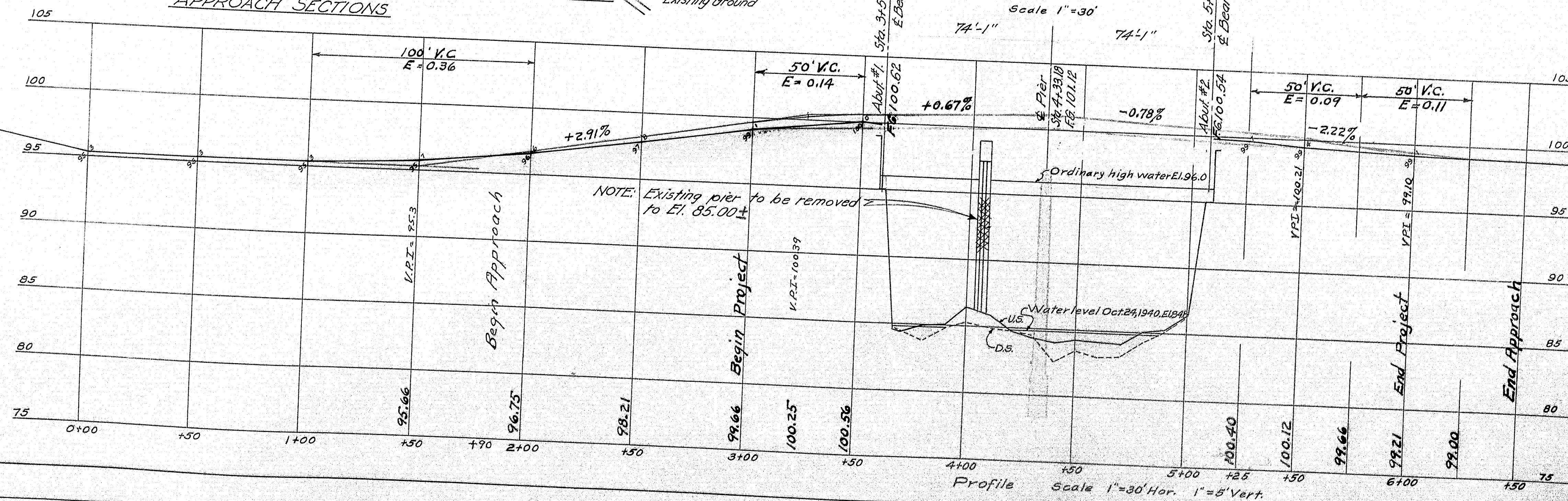


Notes:
Concrete abutments in good condition.
Ordinary high water El. 96.0



HALF TRANSVERSE SECTION THRU CURB
APPROACH SECTIONS

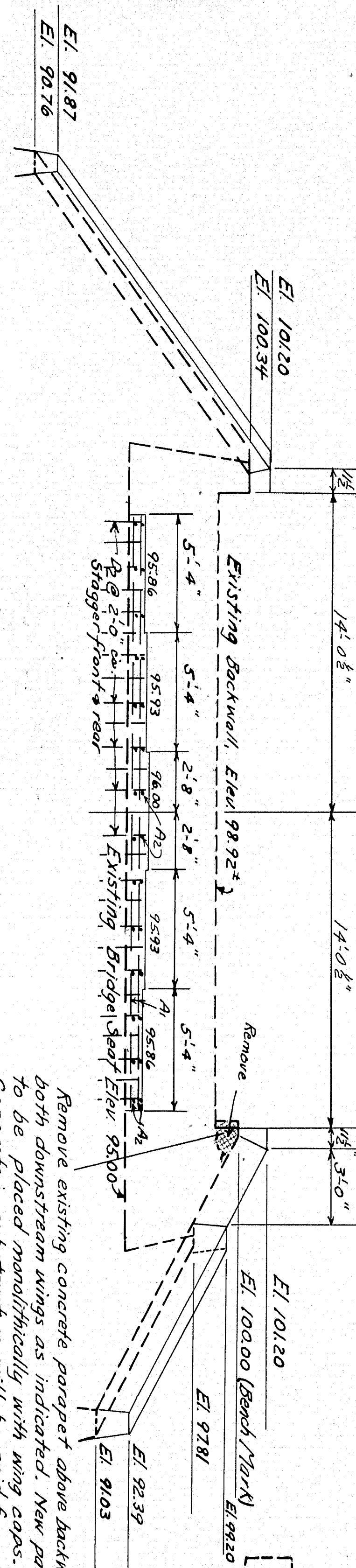
HALF TRANSVERSE SECTION BEYOND CURB



PLOTTED BY WHITE
 TRACED BY WHITE
 STATE HIGHWAY COMMISSION
 BRIDGE DIVISION
ST. CROIX BRIDGE
 OVER
ST. CROIX RIVER
 IN THE TOWN OF
MASARDIS
AROSTOOK COUNTY
 NOV 1940

PART REAR ELEVATION ABUT. NO. 1.

Remove existing concrete parapet above backwall on both downstream wings as indicated. New parapet to be placed monolithically with wing caps. Concrete in substructure will be paid for under Item 463, "Concrete in roadway & sidewalk slabs on steel bridges." Payment for this item shall include payment for removal of concrete in sections shown. Payment for removal of any additional concrete, as determined by Engineer in field, will be made on a force account basis.

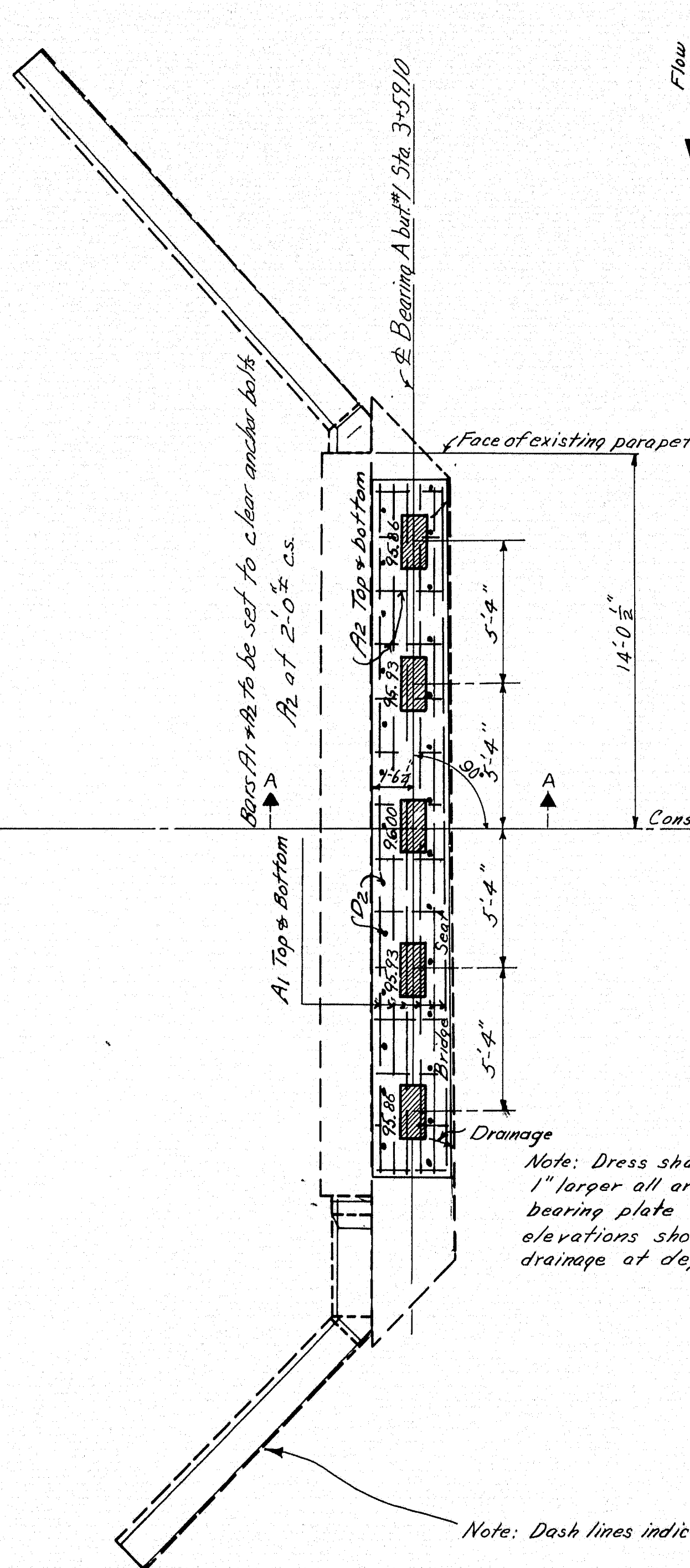


SECTION A-A

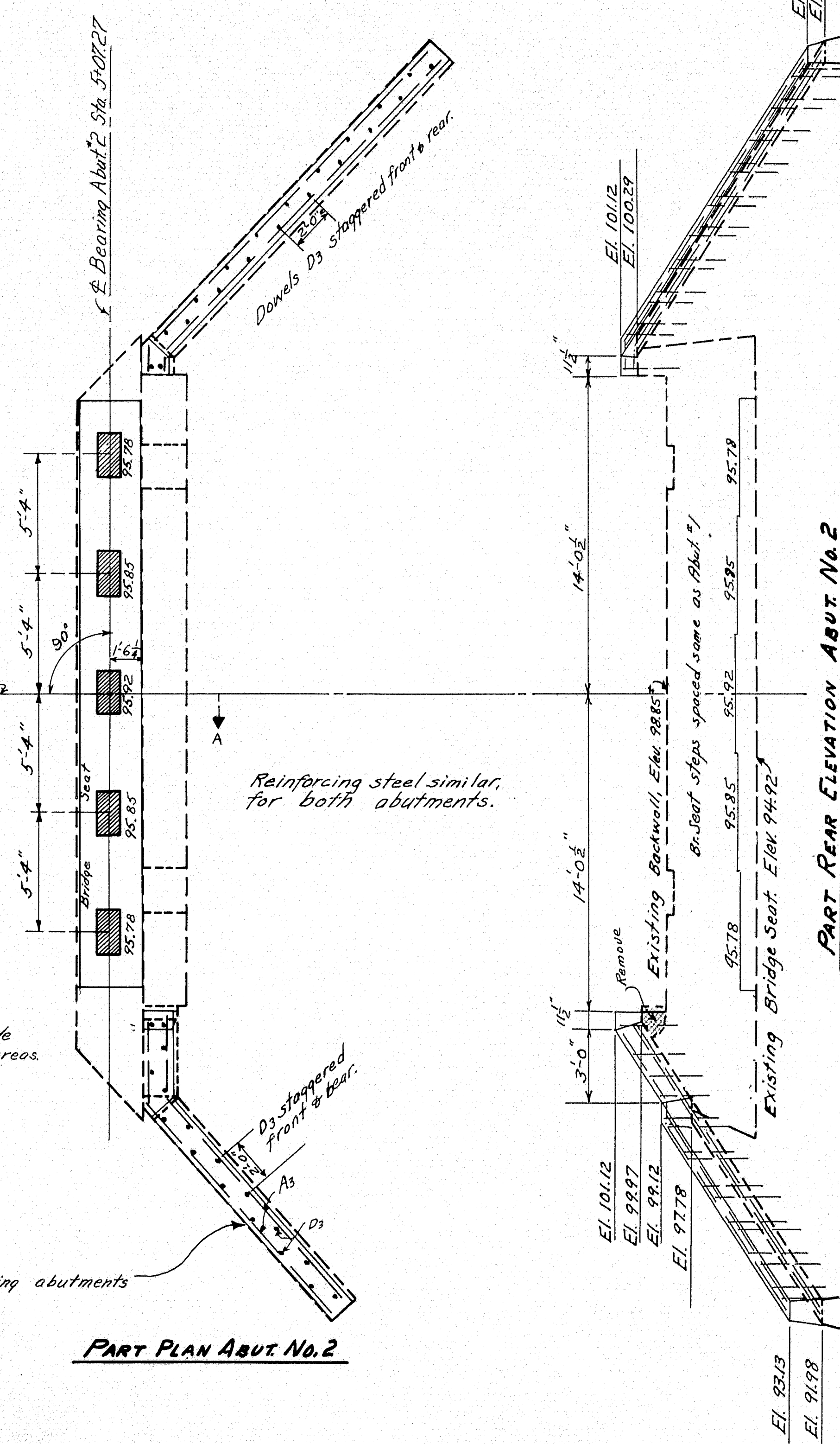
Abut. 1, El. 96.00
Abut. 2, El. 95.92

NOTE: Bars A1 and A2 to be spaced to clear anchor bolts.

PART PLAN ABUT. NO. 1



PART PLAN ABUT. NO. 2

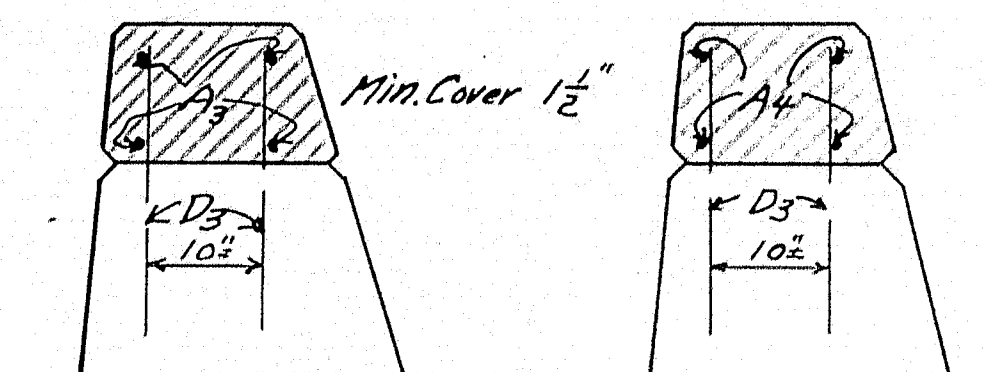


Place two layers of heavy roofing between top of backwall and superstructure. Recesses in top of Abut. 2 backwall shall be filled with concrete which shall have a minimum of twelve hours setting time before superstructure concrete is placed.

Note: Drilling and grouting dowels will be included in the contract unit price under Item 70 "Reinforcing steel, placing."

REINFORCING STEEL SCHEDULE.				
MARK	SIZE	NO.	LENGTH	LOCATION
A1	5/8" φ	24	24'-4"	Abut. Br. Seat caps.
A2	5/8" φ	56	2'-8"	" " "
A3	1/2" φ	8	20'-0"	25' wing caps. Cut & bend in field
A4	1/2" φ	8	24'-0"	25' " " " " " "
D2	1" φ	54	2'-0"	Br. Seat caps.
D3	3/4" φ	74	2'-0"	Wing caps.

See Sheet #4 for additional reinforcing steel.



UPSTREAM DOWNSTREAM WING CAP DETAILS

All dowels to be grouted with a mortar of equal parts of sand and cement before concrete is placed. Chamfer edges of joint between old and new concrete on slope of wing as indicated.

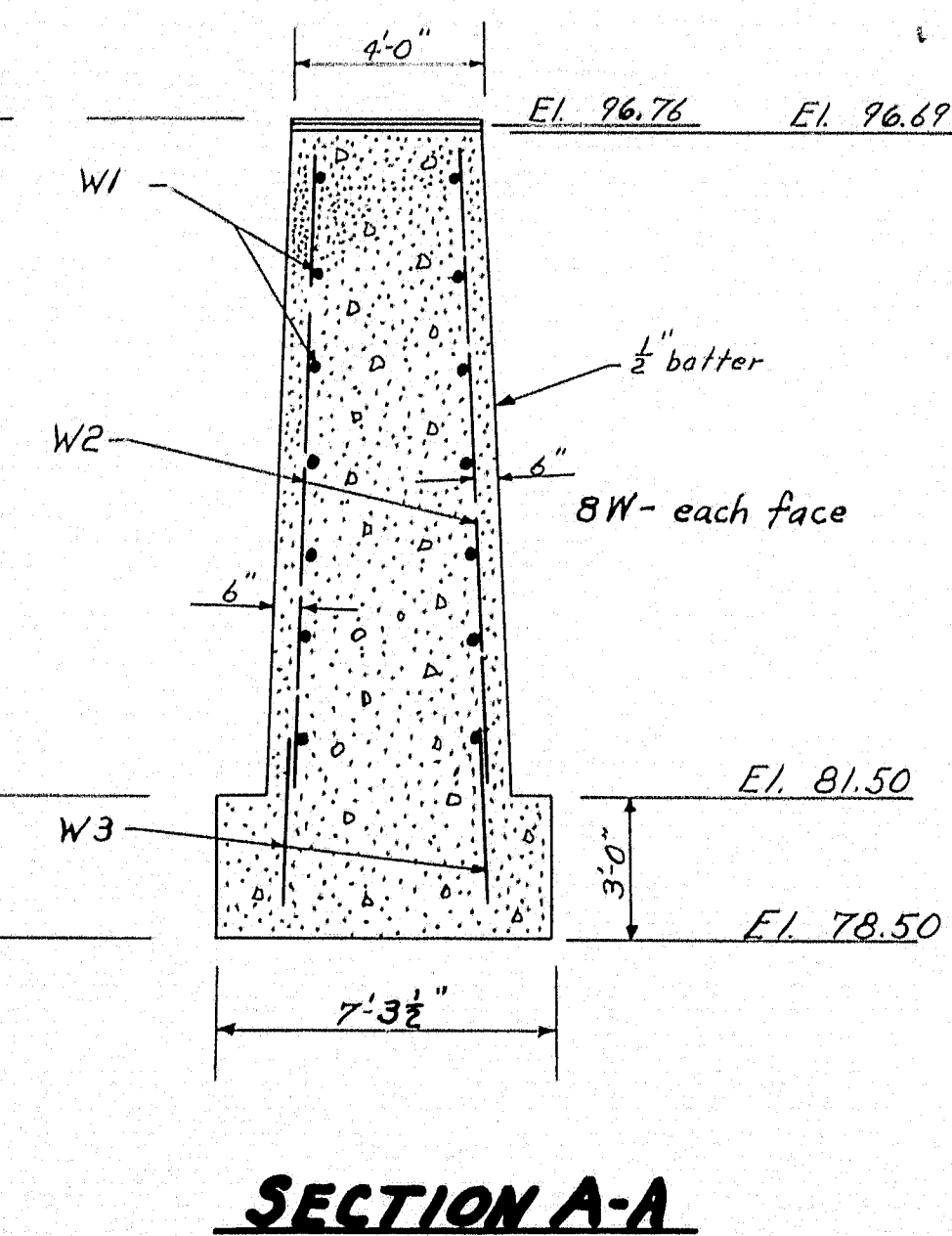
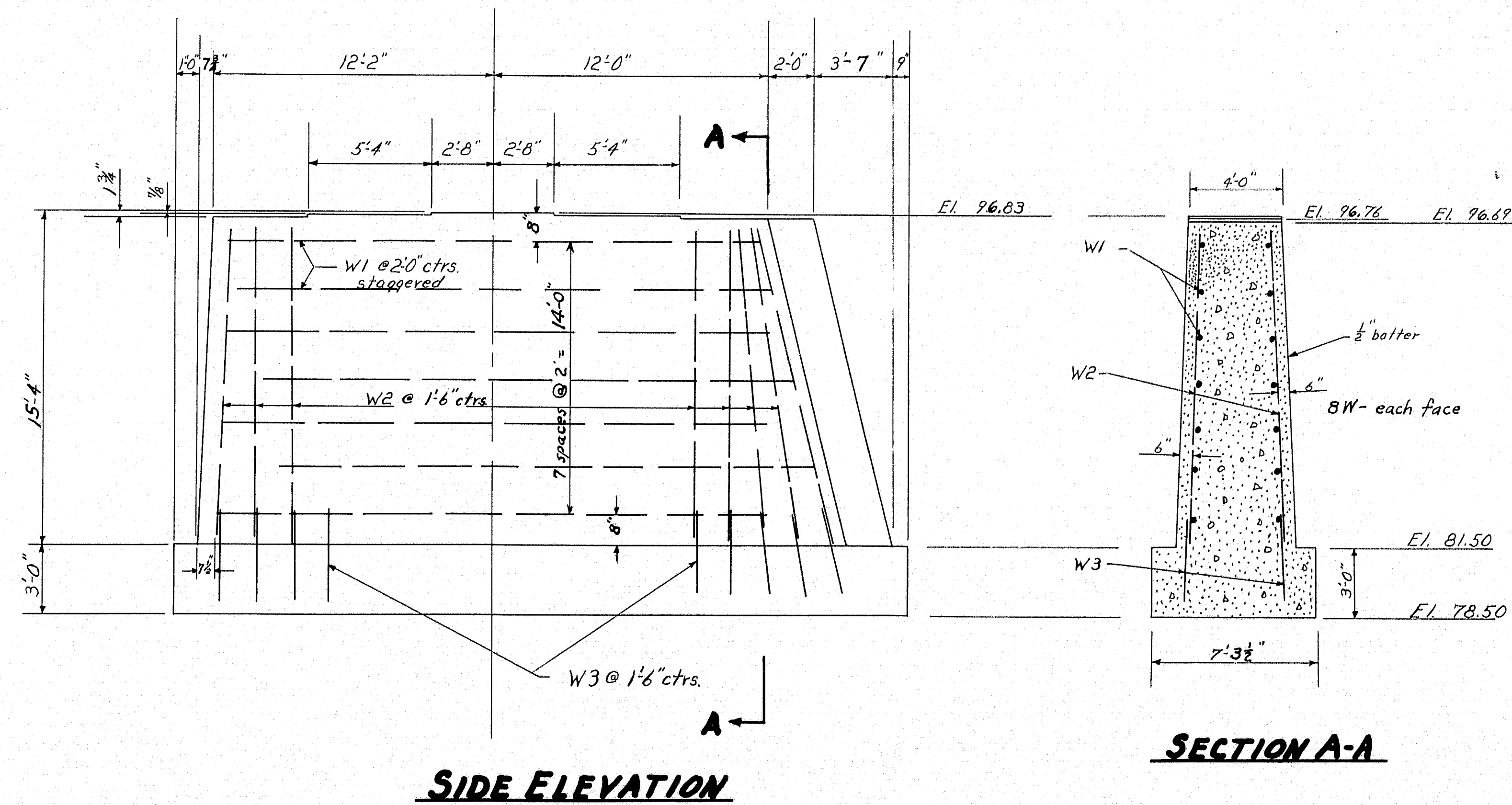
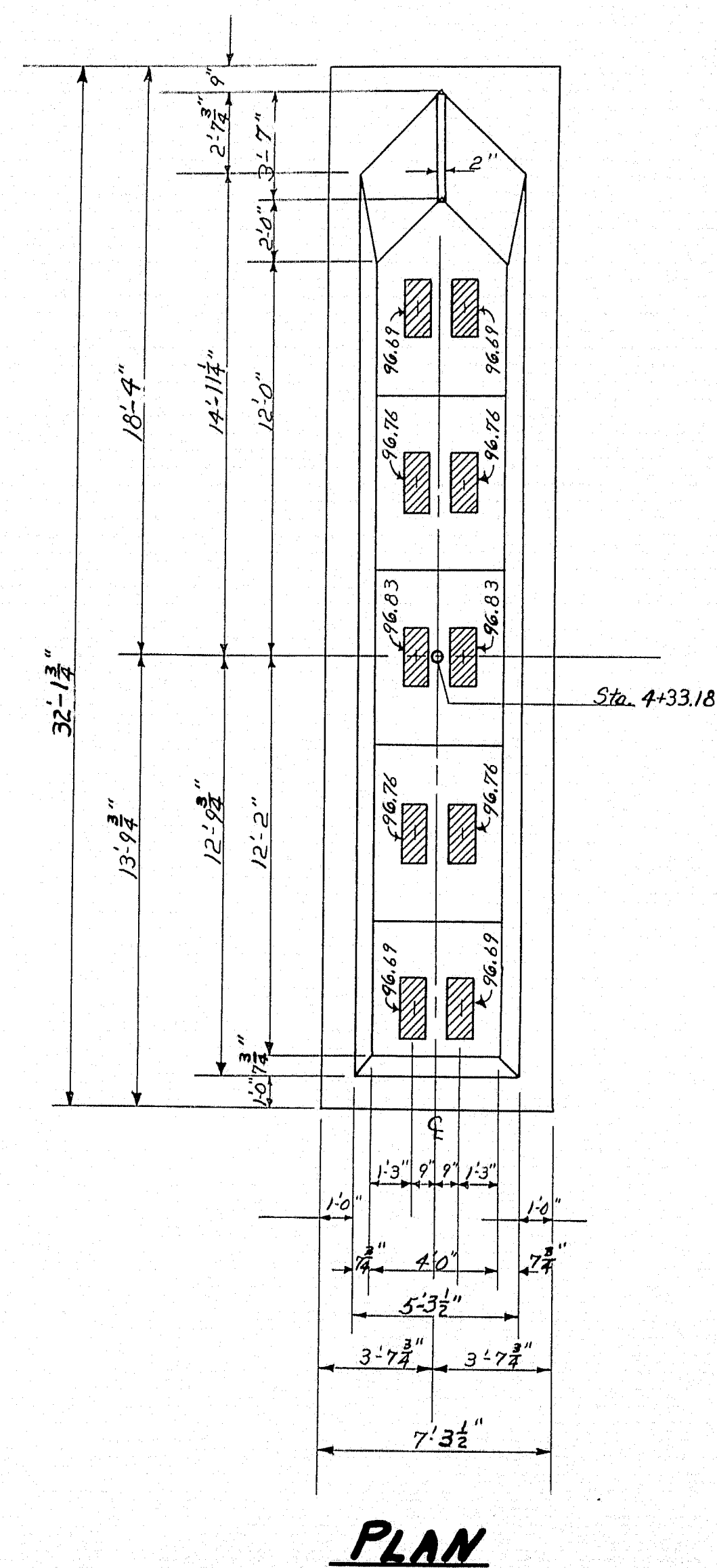
DESIGN - HAMILTON
DETAIL - HODGKINS
TRACE - RISSEL

CHECK - *[Signature]*
STATE HIGHWAY COMMISSION
BRIDGE DIVISION

BRIDGE - 3766

ST. CROIX BRIDGE
OVER
ST. CROIX RIVER
IN THE TOWN OF
MASARDIS
AROOSTOOK COUNTY
ABUTMENTS

SHEET 2 OF 8
AUGUSTA, MAINE
AUGUST 1949



NOTE: Dress shaded areas 1" larger all around than bearing plates and to the exact elevations shown

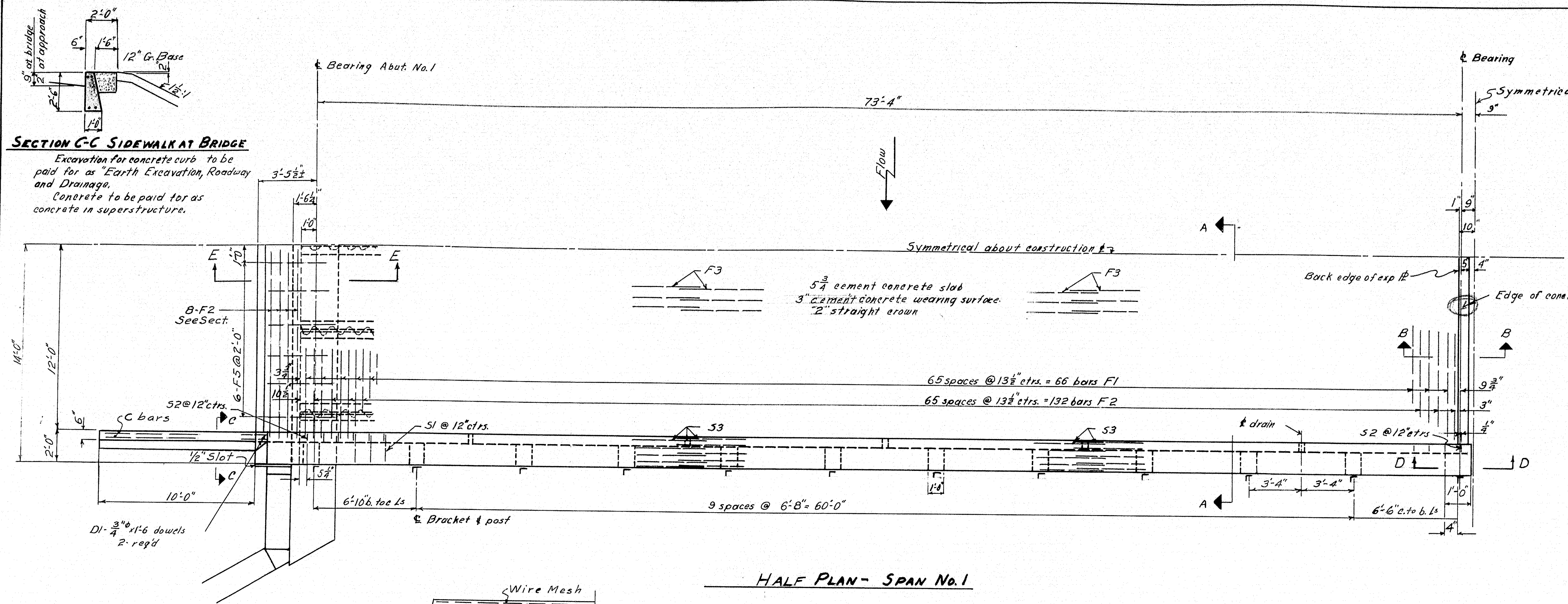
DESIGN— HODGKINS
TRACE — BACHELDER
CHECK — *Wick*

BRIDGE — 3766

STATE HIGHWAY COMMISSION
BRIDGE DIVISION

ST. CROIX BRIDGE
OVER
ST. CROIX RIVER
IN THE TOWN OF
MASARDIS
AROOSTOOK COUNTY
PIER

SHEET 3 of 8 AUGUSTA, MAINE AUGUST 1949

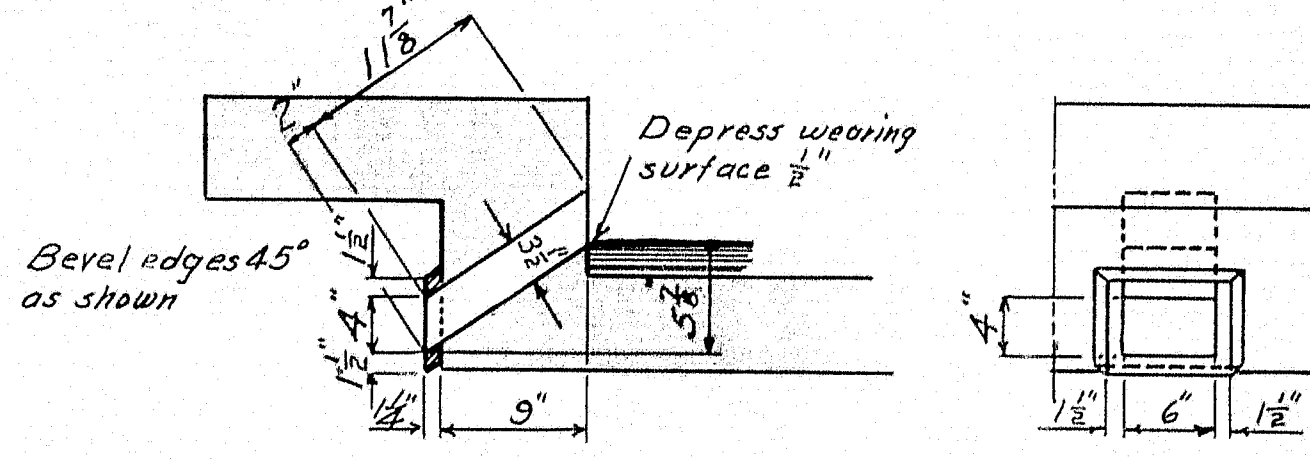


Mark	Size	No.	Length	Location
*S1	1/2"	616	1'-10"	Sidewalk
*S2	1/2"	308	3'-9"	Curb
*S3	3/8"	96	27'-0"	Sidewalk
*S4	3/8"	144	5'-1"	Bracket-slab
*F1	3/8"	132	27'-4"	Slab
*F2	3/8"	280	26'-5"	Slab
*F3	3/8"	264	26'-9"	Slab
*F4	3/8"	32	5'-2"	Diaphragms
*W1	3/8"	16	23'-2"	Pier
*W2	3/8"	36	14'-10"	Pier
*W3	3/8"	36	5'-0"	Pier
*D1	3/8"	24	1'-6"	Bridge-Approach Slab
*F5	3/8"	24	6'-4"	Slab @ Abuts
*C	3/8"	16	9'-6"	Approach Curbs

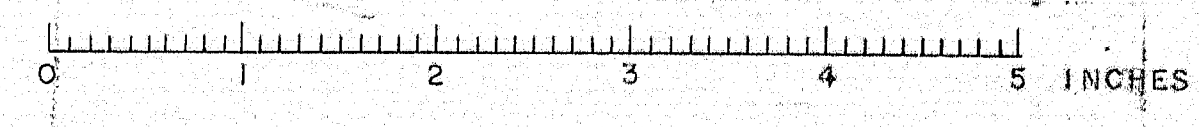
Note: All dimensions to $\frac{1}{2}$ " of reinforcing steel.
* Bent bars

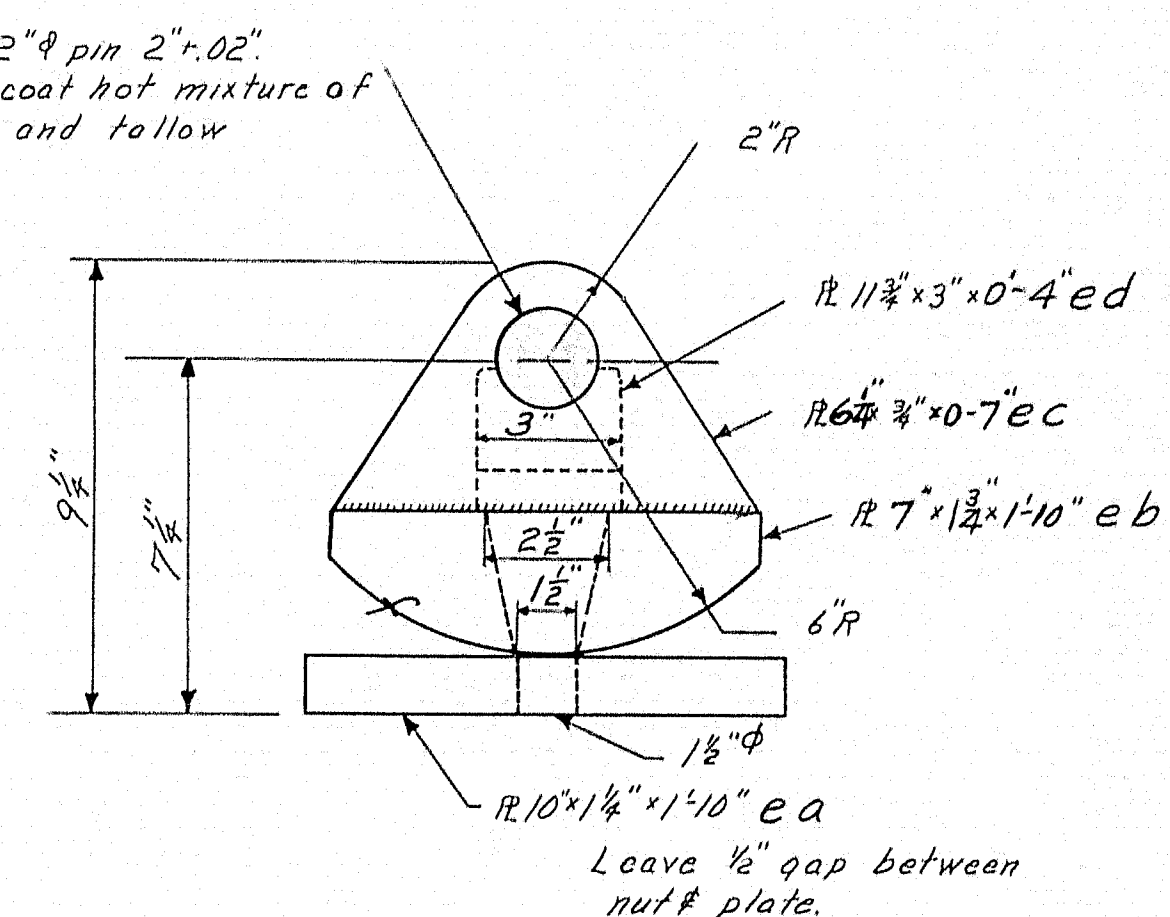
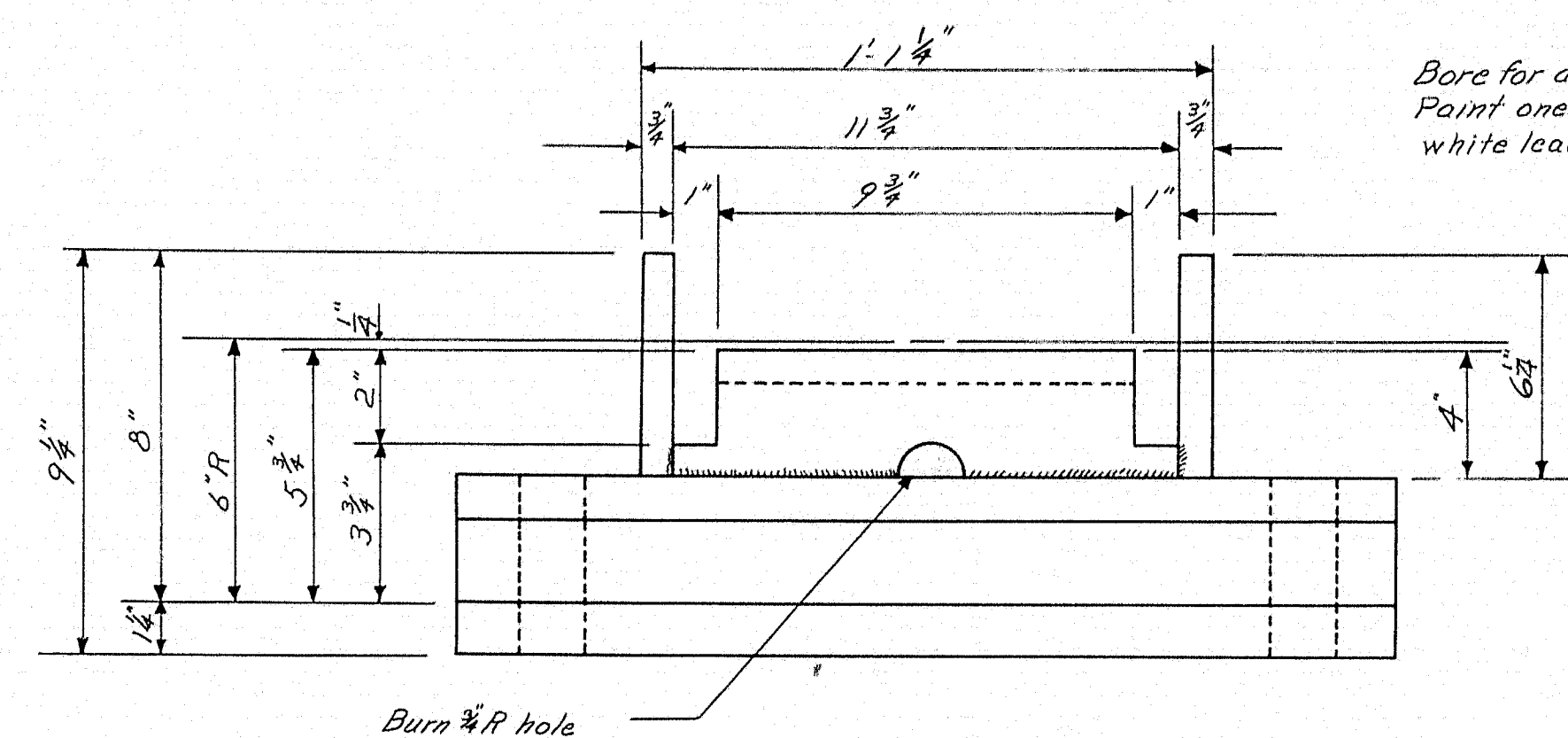
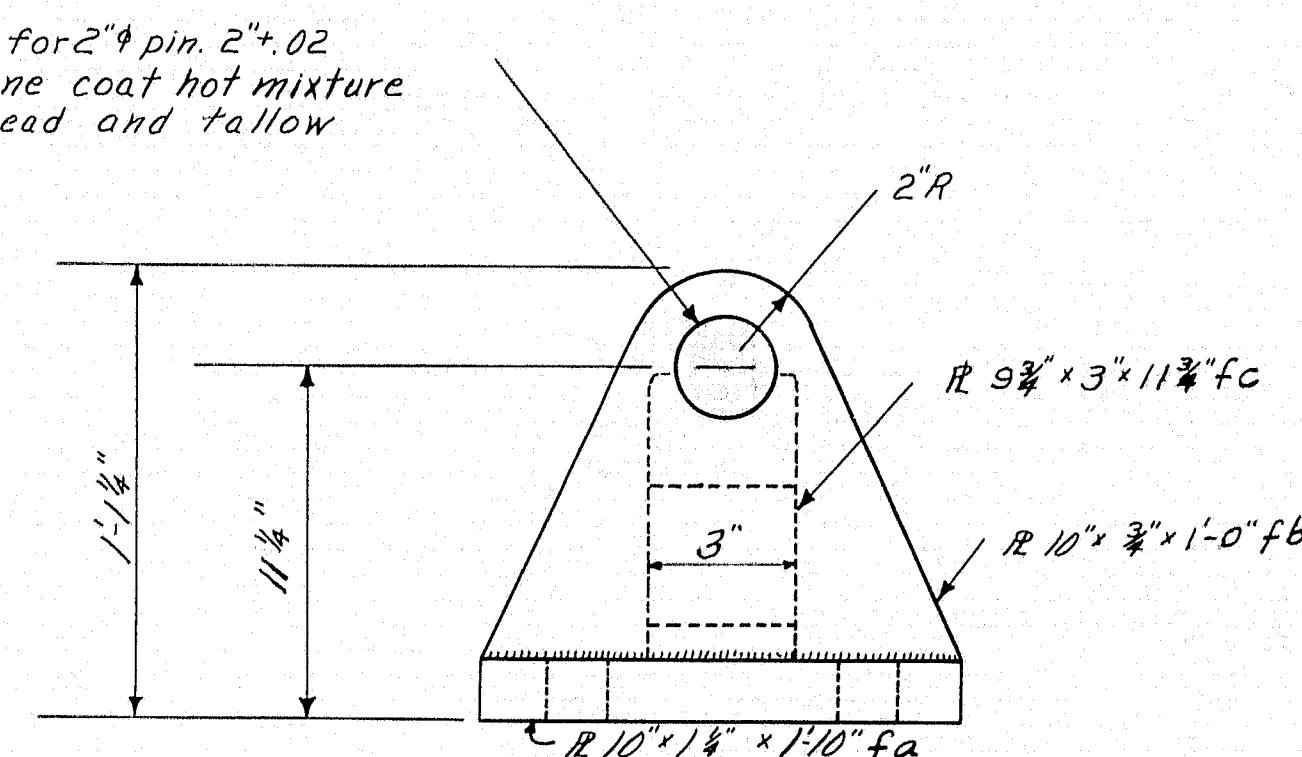
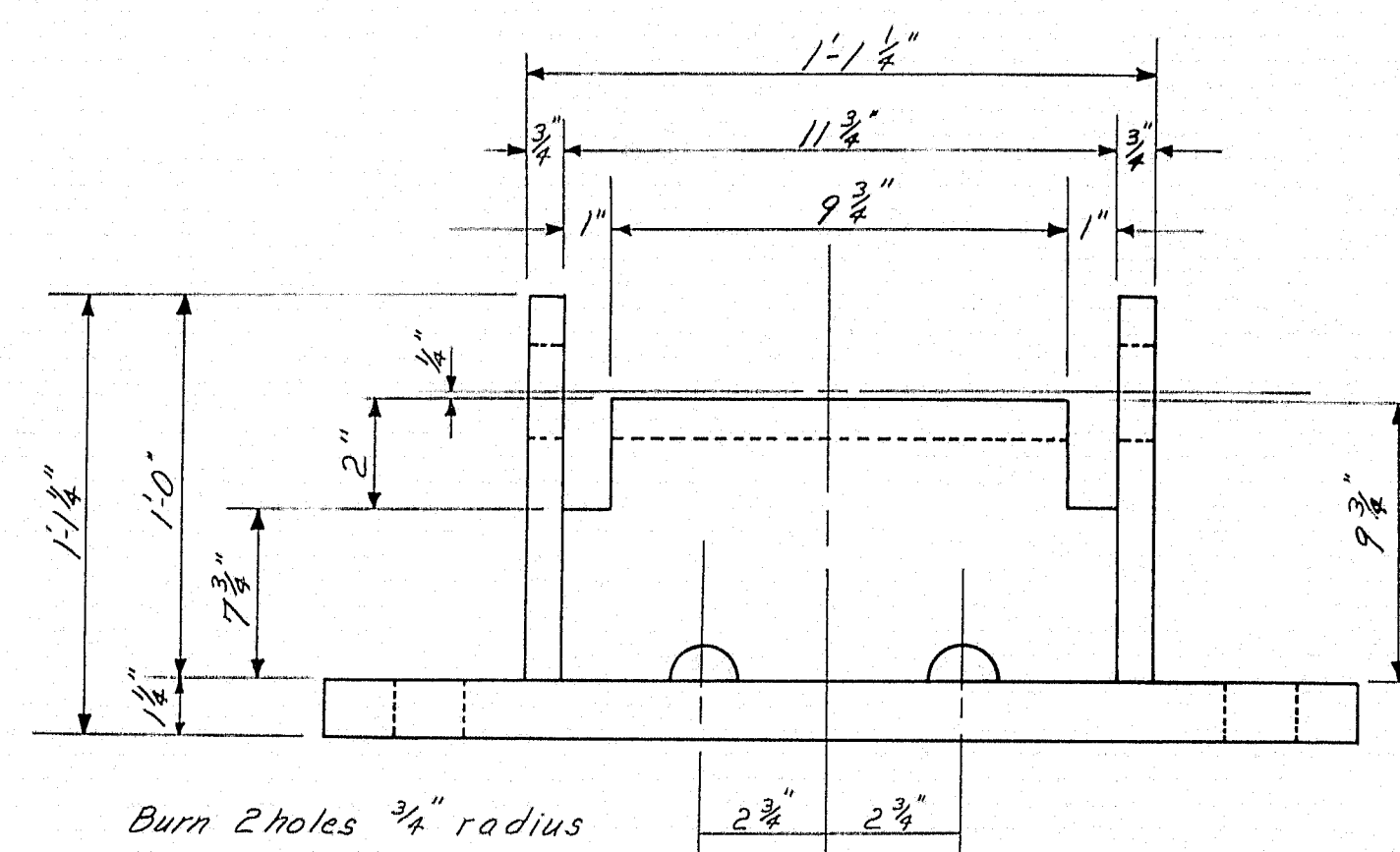
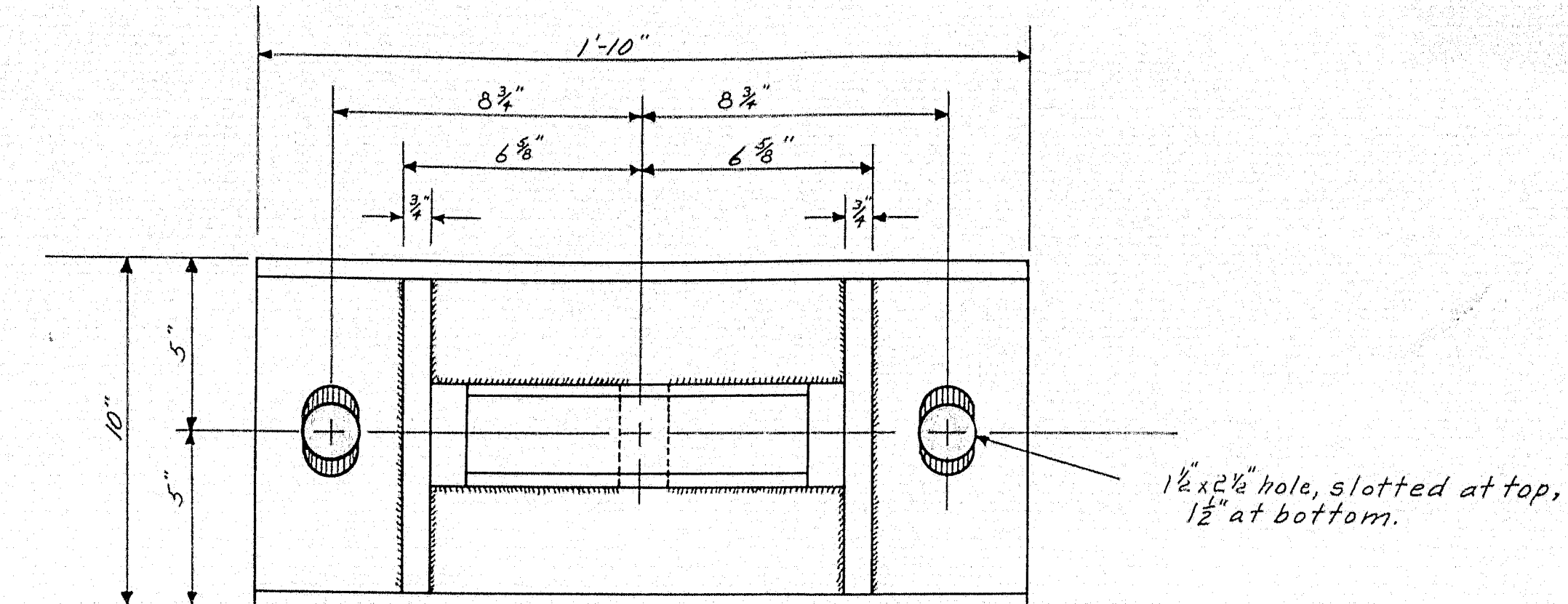
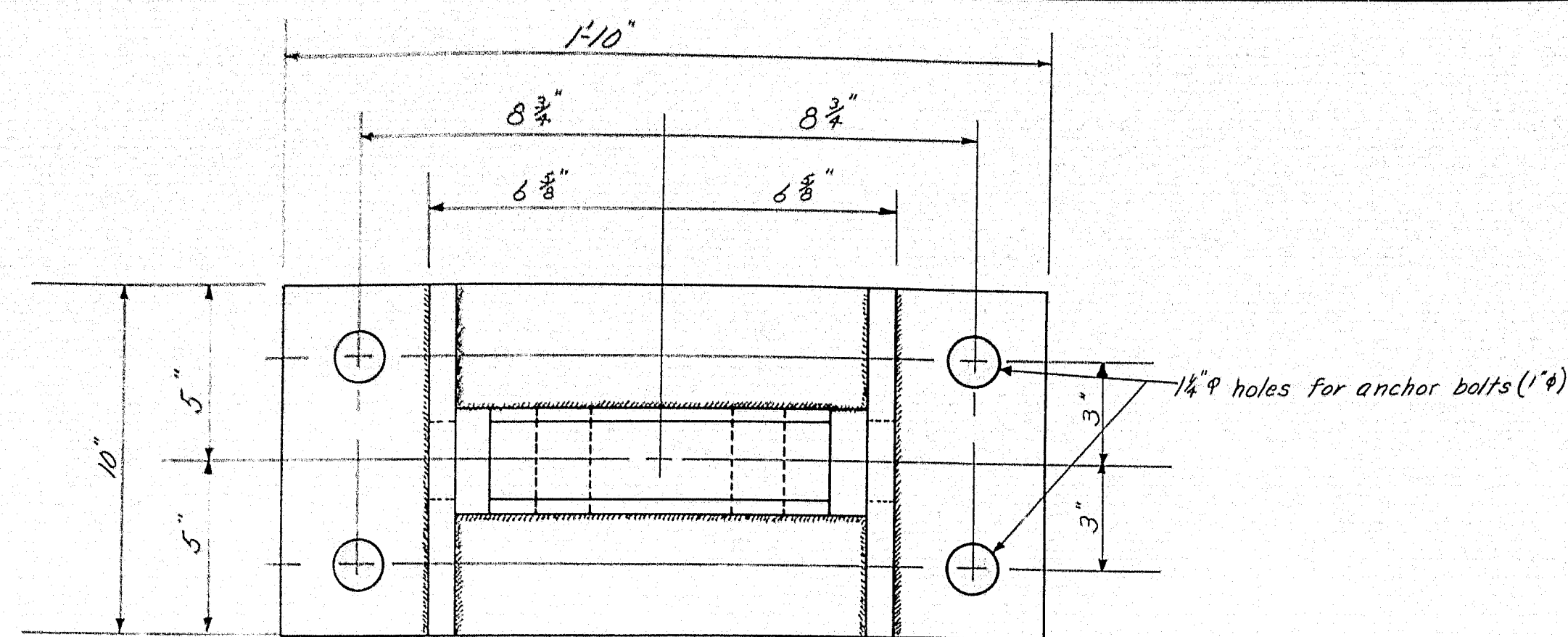
3700 sq. ft. 6" x 6" x 42" Wire Mesh
300 lin. ft. #6 gp. 2" Mesh x 24" wide Wire Mesh. Galv. after weaving. To be Pave Highway Guard or equivalent.

Note- See sheet #2 for additional reinforcing steel.



DESIGN-HAMILTON
DETAIL-HODGKINS
TRACE-RISSEL CHECK-
BRIDGE- 3766
STATE HIGHWAY COMMISSION
BRIDGE DIVISION
ST. CROIX BRIDGE
OVER
ST. CROIX RIVER
IN THE TOWN OF
MASARDIS
AROSTOOK COUNTY
SUPERSTRUCTURE
SHEET 4 OF 8 AUGUSTA, MAINE AUGUST 1949

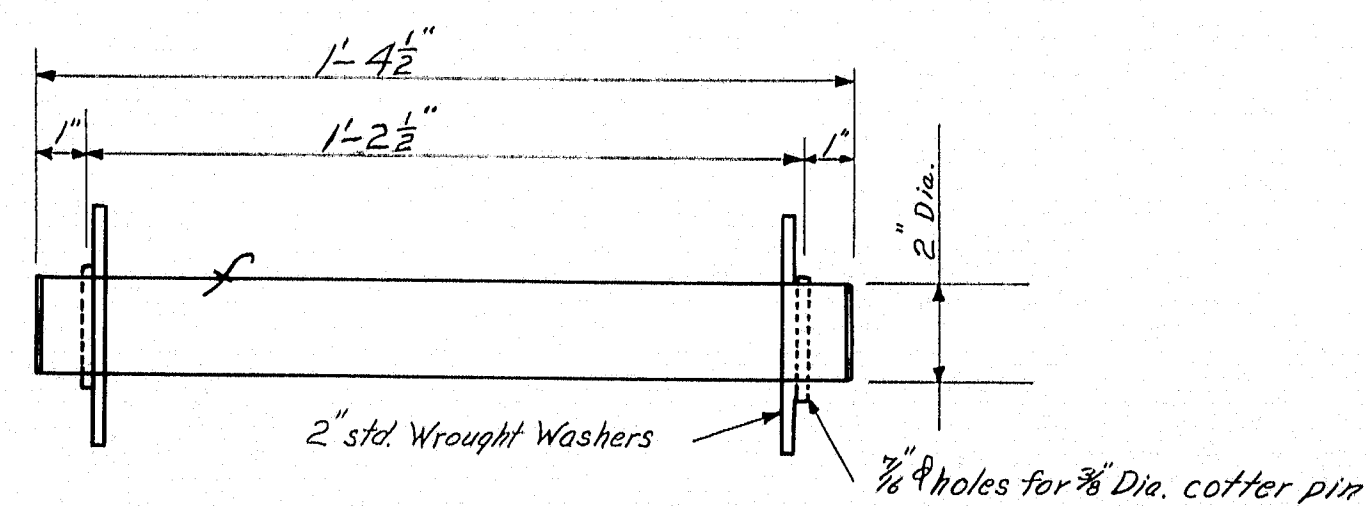




FIXED BEARING FB (10 Req'd.)

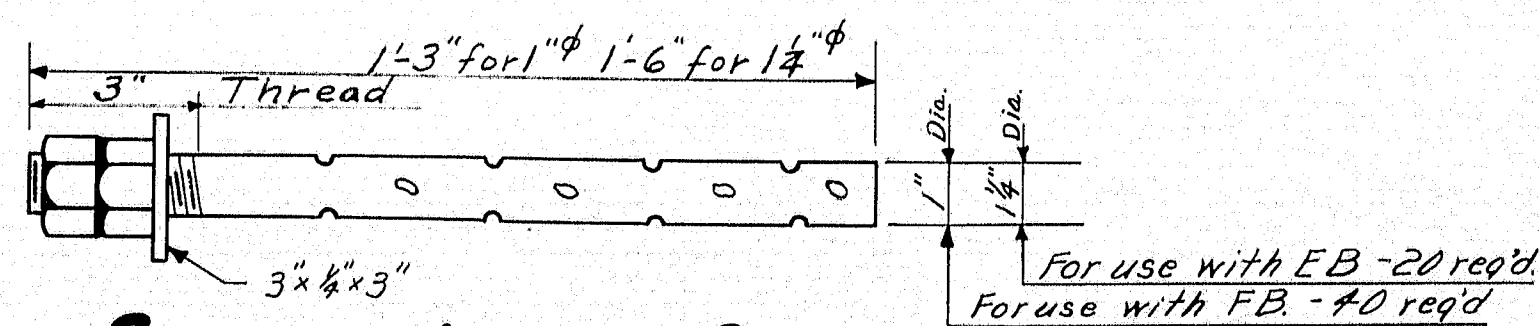
EXPANSION BEARING EB (10 Req'd.)

NOTES:- Paint one shop coat of red lead and oil except contact surfaces.
Welds to be 1/2" fillets unless otherwise specified.



PIN - 2" Dia x 1'-4 1/2" PN (20 Req'd.)

NOTE:- Paint one coat hot mixture of white lead and tallow

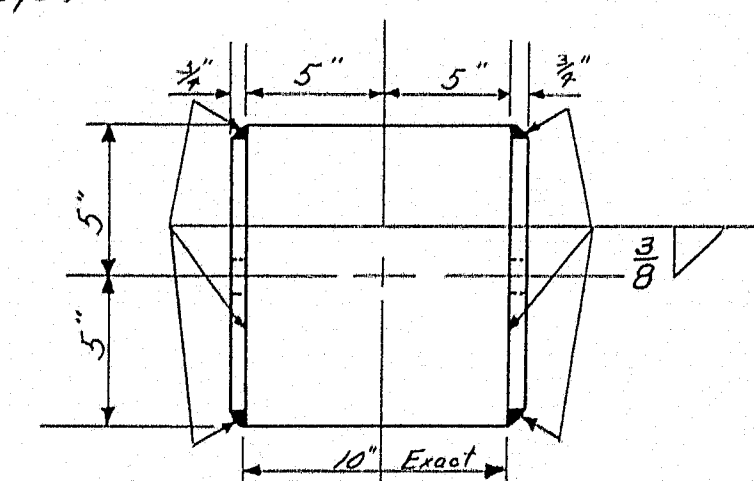


SWEDGE ANCHOR BOLT

each with 2 Hex. Nuts and 1 R Washer

BILL OF MATERIAL

Mark	Description	No	Shop Work	E7	R Non-Skid 5/8" Th	2	To be detailed	A2	4.5x3x3x2.5x2.5	8	as shown
G1	33" W 1/4" x 7/8" x 10 1/2"	2	as shown	E8	R Non Skid 1" Th	2	" " "	P1	R 3 1/2" x 3" x 4"	48	None
G2	33" W 1/4" x 7/8" x 10 1/2"	6	"	E9	L 2 1/2 x 2 1/2 x 1'-10"	28	" " "	P2	R 3" x 3" x 2'-2 1/2"	8	as shown
G3	33" W 1/4" x 7/8" x 10 1/2"	2	"	E10	R 2 1/2 x 2 1/2 x 7 3/4"	10	" " "	FB Assembly 10-Req'd			
D1*	15L 33.9" x 4'-9"	20	None	R1*	4.5x3x3x2'-2"	2	as shown	fa	R 10 1/4 x 1'-10"	10	
D1*	15L 33.9" x 4'-9"	20	"	R1*	4.5x3x3x2'-2"	2	opp. "	fb	R 10 1/4 x 1'-10"	20	
D2*	15L 33.9" x 3'-0"	24	"	R2*	4.5x3x3x2'-2"	2	as "	fc	R 9 3/4 x 3 x 0'-11 1/2"	10	
D2*	15L 33.9" x 3'-0"	24	"	R2*	4.5x3x3x2'-2"	2	opp. "	ba	R 10 x 2 x 0'-10"	10	
Pa	R 6" x 3" x 2'-5 1/2"	128	for D1, D2	R3*	4.5x3x3x2'-0"	4	as "	bb	R 3 3/4 x 4 x 0'-9"	20	
Pb	R 1 1/4" x 3" x 4'-0"	4	as shown	R3*	4.5x3x3x2'-0"	4	opp. "	pn	Pin 2" x 1'-4 1/2"	10	
Pc	R 1 1/4" x 3" x 3'-0"	6	" for G2	R4*	4.5x3x3x2'-0"	4	as "	EB Assembly 10-Req'd			
A1	4 1/2 x 1'-0"	16	as shown	R4*	4.5x3x3x2'-0"	4	opp. "	ea	R 10 x 1 1/4 x 1'-10"	10	
				R5*	4.5x3x3x1'-3 1/4"	2	as "	eb	R 7 x 1 1/4 x 1'-10"	10	
				R5*	4.5x3x3x1'-3 1/4"	2	opp. "	ec	R 6 1/4 x 3/4 x 0'-7"	20	
E1	L 8 x 6 x 3/4"	2	To be detailed	R6*	4.5x3x3x1'-3 1/4"	2	as "	ed	R 4 x 3 x 0'-11 1/2"	10	
E2	L 4 x 3 x 1/2 x 4'-2"	8	" " "	R6*	4.5x3x3x1'-3 1/4"	2	opp. "	eb	R 10 x 2 x 0'-10"	10	
E3	L 4 x 3 x 1/2 x 0'-8"	4	" " "	RPI*	4.6x4x4x6'-5 1/2"	22	as shown	bb	R 3 3/4 x 4 x 0'-9"	20	
E4	Strap 1 1/2 x 2 x 1'-1	12	" " "	RPI*	4.6x4x4x6'-5 1/2"	22	opp. "	pn	Pin 2" x 1'-4 1/2"	10	
E5	R 5 1/2 x 3" x 2'-0"	2	" " "	RPE*	4.6x4x4x6'-5 1/2"	2	as shown	2 std. W. Washer			
E6	R Non-Skid 5/8" Th	2	" " "	RPE*	4.6x4x4x6'-5 1/2"	2	opp. "	3/8" Cotter Pin			
				P3	R 3 x 3/4 x 1'-7"	48	as shown	B1	1/2 std. W. Washer	96	
								B1	Mach Bolt 1/2 x 11"	48	Hex Hd Nut
								B2	Mach Bolt 1/2 x 10 1/2"	184	Hex Hd Nut
								1/4 dia x 1-3 Swedge Anchor Bolt 20-Req'd			
								1" dia x 1-3 Swedge Anchor Bolt 40-Req'd			

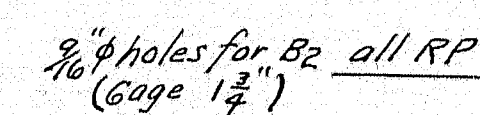


DETAIL OF SOLE PLATE B (20-Req'd.)

Work this sheet with Sheets 5+7

Specifications -
Maine State Highway
Specifications for Steel
Highway Bridges, Nov. 1945.
Paint - One shop coat
red lead and oil except as
noted and contact surfaces

DESIGN - HODGKINS	TRACE - BACHELDER	CHECK -	BRIDGE - 3766
STATE HIGHWAY COMMISSION BRIDGE DIVISION			
ST. CROIX BRIDGE OVER ST. CROIX RIVER IN THE TOWN OF MASARDIS AROOSTOOK COUNTY BEARINGS SHEET 6 OF 8 AUGUSTA, MAINE AUGUST 1949			



RAIL ASSEMBLY

Steel Wire Mesh Fence (W.M.F.) with "2" openings- 2'-0" wide
6ga. wire. Galvanize after weaving.
To be Page Highway Guard or equivalent.



RI² as shown - 2 req'd.
RI¹ opp. hand - 2 req'd.



R3^R as shown - 4 req'd
R3^L opp hand - 4 req'd.



R 5^R as shown - 2 req'd
R 5^L opp hand - 2 req'd



(48 req'd)



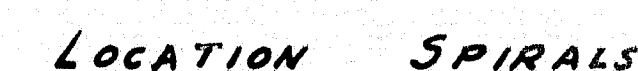
R2^R as shown - 2 req'd
R2^L oop hand - 2 req'd



$R A^R$ as shown - 4 req'd
 $R A^L$ opp. hand - 4 req'd



R6^R as shown - 2 req'd
R6^L opp. hand - 2 req'd.



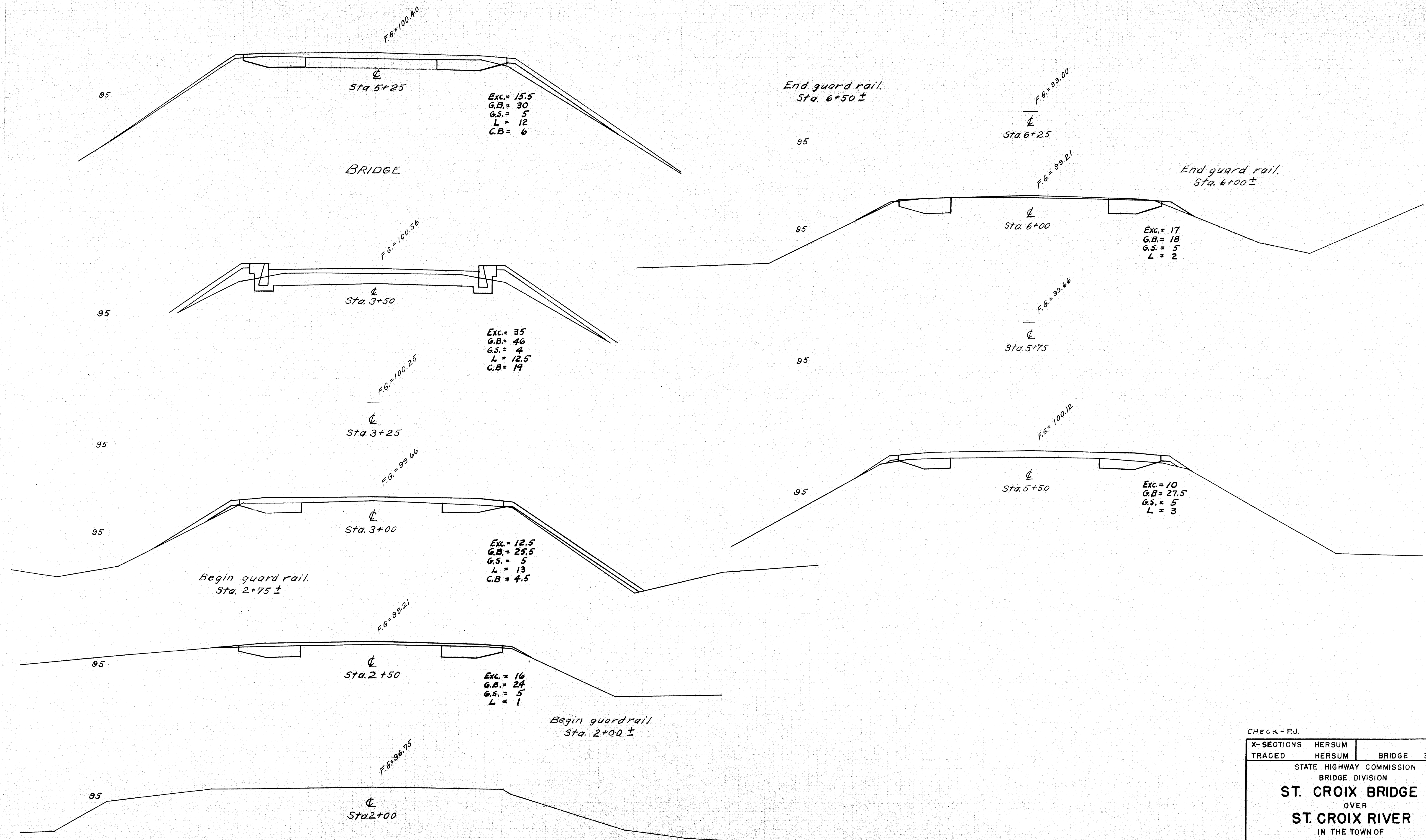
Payment for furnishing and erecting the spirals, including welding to the stringers, to be made under the item "Spiral reinforcement, delivered and erected."

Work this sheet with Sheets 5+6

DESIGN-HAMILTON DETAIL-HODCKINS TRACE-RISSEL	CHECK- <i>Page 2</i>	BRIDGE - 3766
STATE HIGHWAY COMMISSION BRIDGE DIVISION		
ST. CROIX BRIDGE		
OVER		
ST. CROIX RIVER		
IN THE TOWN OF		
MASARDIS		
AROOSTOOK COUNTY		
STEEL DETAILS		
SHEET 2 OF 4	AUGUSTA MAINE	AUGUST 1949

SHEET 7 OF 8 AUGUSTA, MAINE AUGUST 1949

49-35



CHECK - R.J.

X-SECTIONS	HERSUM	BRIDGE	3766
TRACED	HERSUM	STATE HIGHWAY COMMISSION	
		BRIDGE DIVISION	
		ST. CROIX BRIDGE	
		OVER	
		ST. CROIX RIVER	
		IN THE TOWN OF	
		MASARDIS	
		AROOSTOOK COUNTY	
		CROSS SECTIONS	
SHEET 8 OF 8	AUGUSTA, MAINE	JAN. 1950	

49-36

0 1 2 3 4 5 INCHES